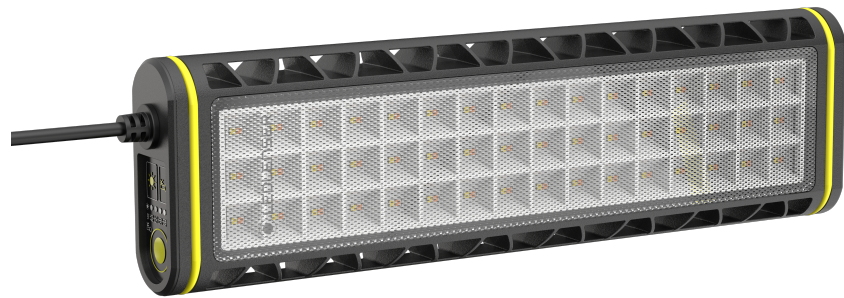




# — PRODUCT DATA SHEET

## AT10C Work



# AT10C Work

## PRODUCT DESCRIPTION

Reliable lighting is key – especially in an emergency. That's where the Ledlenser AT10C Work comes into play. The mains-operated Task Light can easily be mounted in tents, on scaffolding and on ceilings and provides continuous and efficient lighting for disaster relief teams, firefighters or construction workers.

- Extremely bright 5000 lm Task Light with 5 brightness levels and 5-step tunable white light
- Efficient directed light, maximum illuminance and reduced glaring thanks to Multi-Concentrated Light technology
- Flexible mounting via hook and loop fastener and M10 internal threads for tripod or wall mounting
- High water and dust protection (IP67) and robust aluminum housing
- Bluetooth ready<sup>6</sup>, separately available Controller for Area Lights

### TECHNICAL DATA

Width [mm]	106
Depth [mm]	41
Height [mm]	373
Weight without batteries [g]	1365
Focus function	No
Primary material	Aluminum alloy
Secondary material	Other plastics
Optic	Reflector
Cartridge	No

### POWER SUPPLY

Rechargeable	No
Energy modes	Constant Light

### FURTHER SPECIFICATIONS

IP class	IP67
Drop test (drop height) [m]	1.5
IK Code [J]	7
Working temperature range [°C]	-20 to +40

### LIGHT FUNCTIONS

Low Power, Mid Power, Power

### LIGHT SOURCE

Color	Tunable white
Color temperature [K]	3000 to 6500
Color rendering index (CRI)	80

### LIGHT VALUES

ANSI – Constant Light	Power	Mid Power	Low Power
Light output <sup>1</sup> [lm]	5000	2750	500
Beam distance <sup>1</sup> [m]	100	75	30

### SWITCH

Multifunctional Switch

### FEATURES

Tunable white, Reduced Peripheral Glare, Transportation lock, Dimmable, Memory function

### TECHNOLOGIES

Multi-Concentrated Light, Temperature Control System, Cooling Technology

# AT10C Work

## PACKAGING AND LOGISTICS



### PACKAGING INFORMATION

Type of packaging	Sleeve Case
Scope of delivery	Power adapter, Diffuser
Item No.	502916
Customs tariff number	94054099900
Color	black

### SINGLE PACKAGE

Dimensions W x H x D [cm]	45.5 x 9.6 x 30.3
Gross weight [g]	3715
GTIN-13	4058205033237

### EXPORT CARTON

Unit	2
Dimensions W x D x H [cm]	48 x 21.5 x 35.5
Gross weight [kg]	8
GTIN-13	4058205033213

# AT10C Work

## ACCESSORIES

ITEM NUMBER	PRODUCT NAME	MSRP
503016	Extension Cable 5m	
503018	Controller for Area Lights	

## FOOTNOTES

The information pertaining to scope of delivery, appearance, performance, dimensions and weight corresponds to the information available at the time of publication. In the interest of product development, we reserve the right to change scope of delivery, appearance, design and color without prior notice. Product images may vary from the actual products and may show optional accessories which can be purchased separately. Errors and omissions excepted.

1) Measurement values according to ANSI FL1 in the respective setting. If no setting is explicitly indicated, the values refer to luminous flux (lumens/lm) and lighting range (meters/m) on the highest setting, and to battery duration (hours/h) on the lowest setting. A boost function (if available) can be used several times, but only for short periods of time. If the light is equipped with (a) colored LED(s), the measurement values are given for the white light or the white LED. If the light has different energy modes, the measurement is made based on the "energy saving mode".