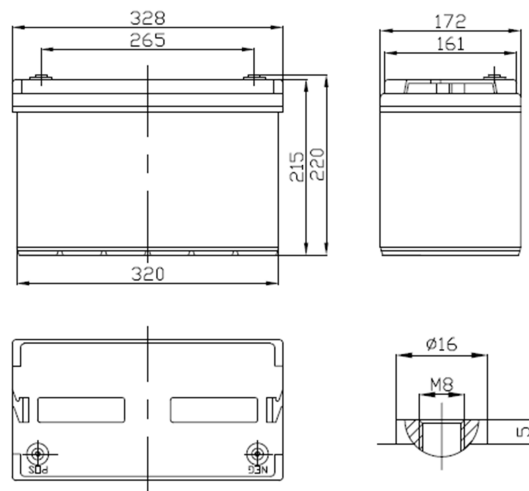


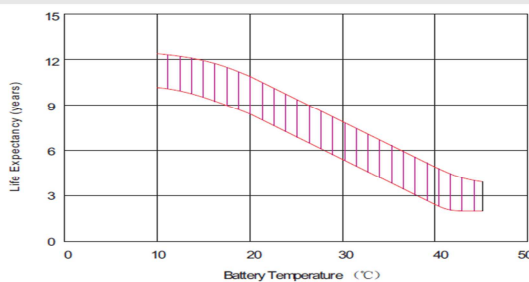


SBL 100-12i(sh) (12V 100Ah)

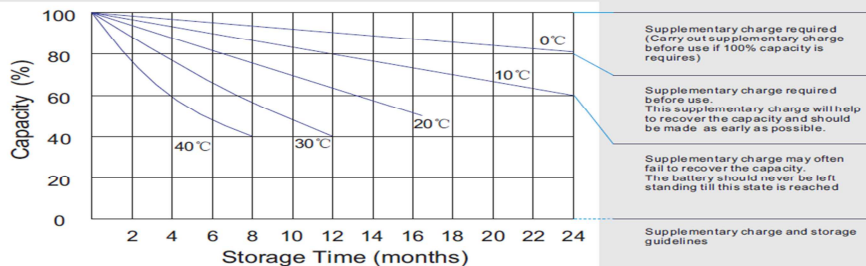
Design life time	10-12 years								
Technology	VRLA-AGM								
Voltage	12 V								
Capacity minimalna (10hr-rate to 1,8 V/cel at 25°C)	100 Ah								
Dimensions	<table> <tr> <td>Length</td><td>328 mm</td></tr> <tr> <td>Width</td><td>172 mm</td></tr> <tr> <td>High</td><td>215 mm</td></tr> <tr> <td>Total high</td><td>220 mm</td></tr> </table>	Length	328 mm	Width	172 mm	High	215 mm	Total high	220 mm
Length	328 mm								
Width	172 mm								
High	215 mm								
Total high	220 mm								
Weight	~ 30,0 kg								
Internal resistance – full charged battery at 25°C	~ 5 mΩ								
Temp. range	<table> <tr> <td>Discharge</td><td>- 20°C ~ + 60°C</td></tr> <tr> <td>Charge</td><td>- 0°C ~ + 50°C</td></tr> <tr> <td>storage</td><td>- 20°C ~ + 60°C</td></tr> </table>	Discharge	- 20°C ~ + 60°C	Charge	- 0°C ~ + 50°C	storage	- 20°C ~ + 60°C		
Discharge	- 20°C ~ + 60°C								
Charge	- 0°C ~ + 50°C								
storage	- 20°C ~ + 60°C								
Battery case	ABS (UL-94HB)								



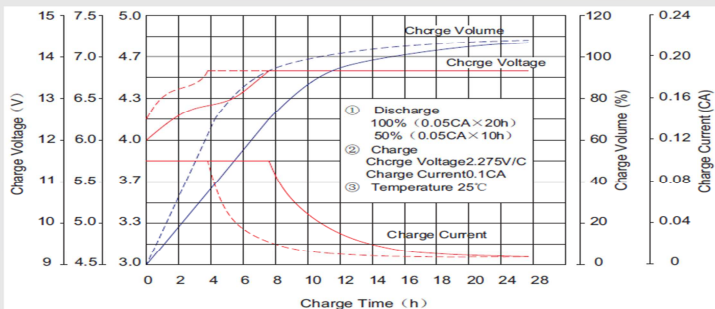
Effect of temperature on long term float life



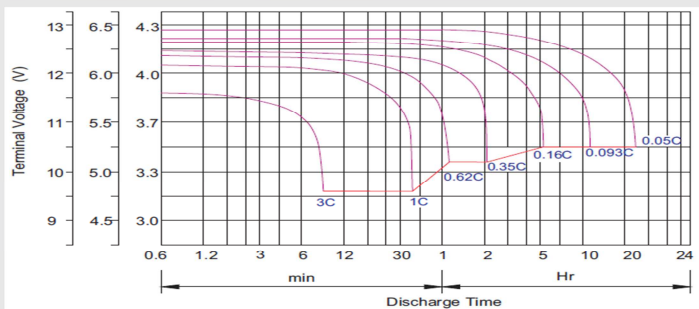
Storage characteristic



Charge characteristic Curve for standby use



Discharge characteristic Curve



Constant Current Discharge Characteristics (A at 25°C)

napięcie/czas	5 min	10 min	15 min	30 min	1 h	2 h	3 h	4 h	5 h	8 h	10 h	20 h
9.6 V	320.7	226.9	181.4	112.7	65.00	38.89	26.88	22.03	18.03	12.42	10.50	5.777
10.0 V	311.4	215.8	177.7	110.8	64.70	38.60	26.78	21.93	17.93	12.32	10.40	5.672
10.2 V	302.2	208.2	174.9	109.8	64.10	38.31	26.57	21.83	17.82	12.22	10.30	5.567
10.5 V	271.3	192.1	166.5	107.1	63.50	38.02	26.47	21.62	17.61	12.12	10.20	5.462
10.8 V	244.9	175.2	153.5	102.4	62.00	37.33	25.75	21.11	17.29	11.92	10.10	5.357
11.1 V	209.1	156.6	137.7	95.91	58.90	35.68	24.62	20.09	16.55	11.41	9.796	5.041

Constant Power Discharge Characteristics (W at 25°C)

napięcie/czas	5 min	10 min	15 min	30 min	1 h	2 h	3 h	4 h	5 h	8 h	10 h	20 h
9.6 V	3317	2416	1996	1284	751.1	458.4	319.9	262.6	215.1	148.3	125.5	69.26
10.0 V	3251	2342	1964	1269	749.3	456.0	320.0	262.3	214.6	147.6	124.7	68.08
10.2 V	3214	2280	1941	1260	743.5	453.3	318.6	261.7	213.9	146.6	123.6	66.80
10.5 V	2926	2123	1852	1230	736.8	450.0	317.4	259.3	211.3	145.4	122.4	65.54
10.8 V	2665	1957	1712	1179	723.2	444.2	308.7	253.4	207.5	143.0	121.2	64.28
11.1 V	2341	1770	1541	1108	692.3	427.7	295.4	241.1	198.6	136.9	117.6	60.50