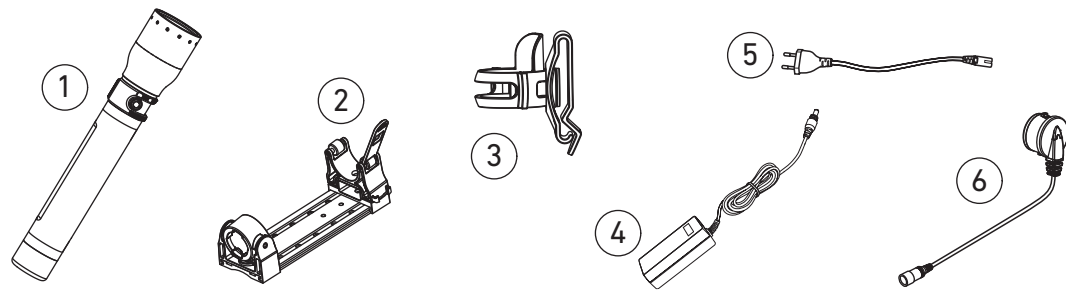
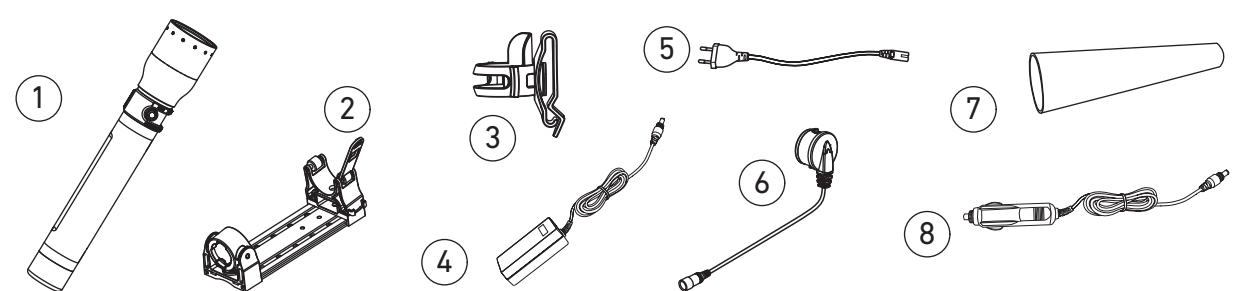


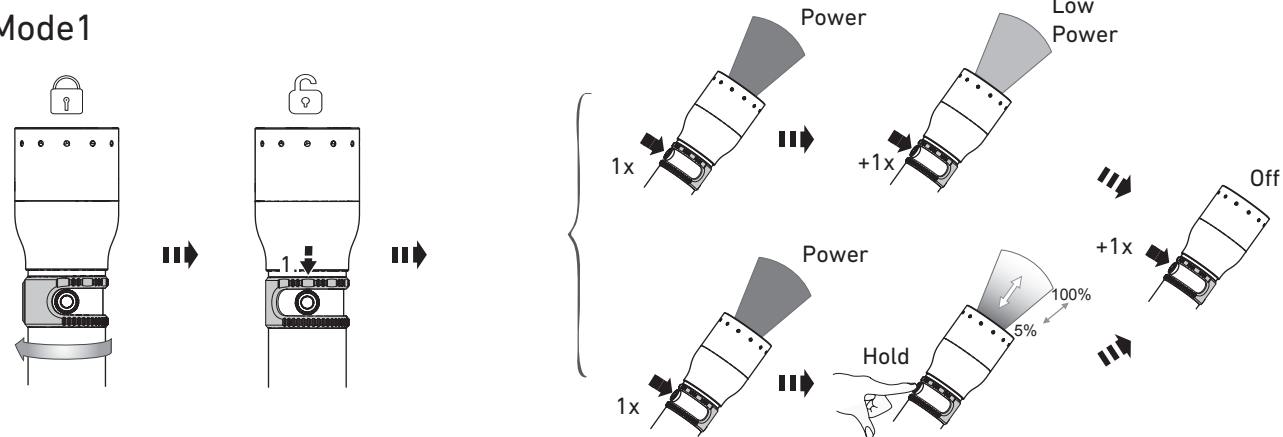
P17R



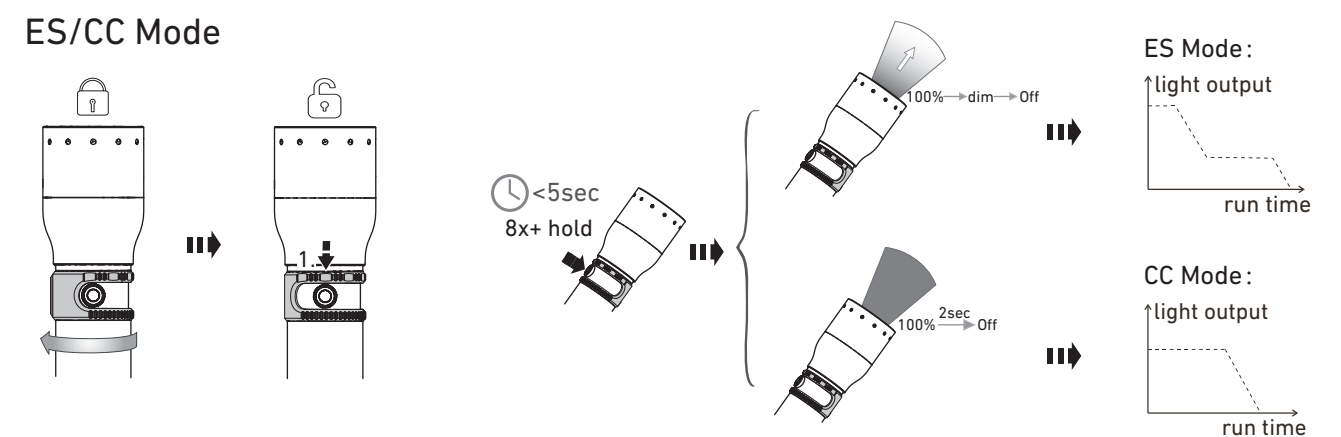
i17R



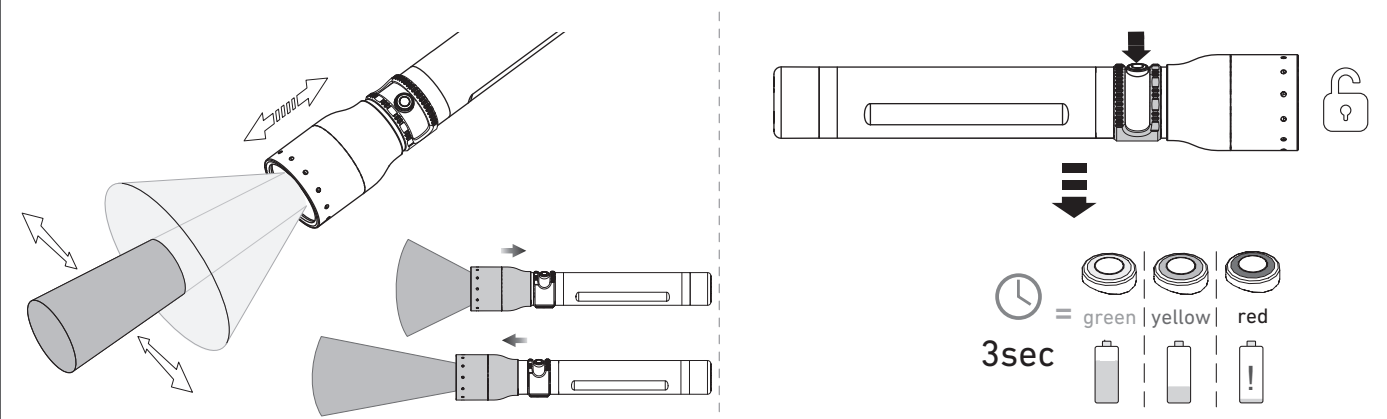
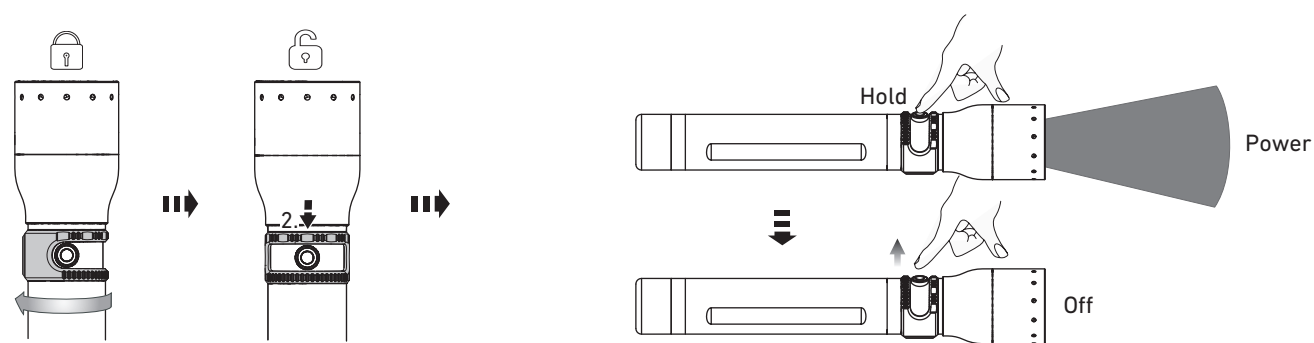
Mode1



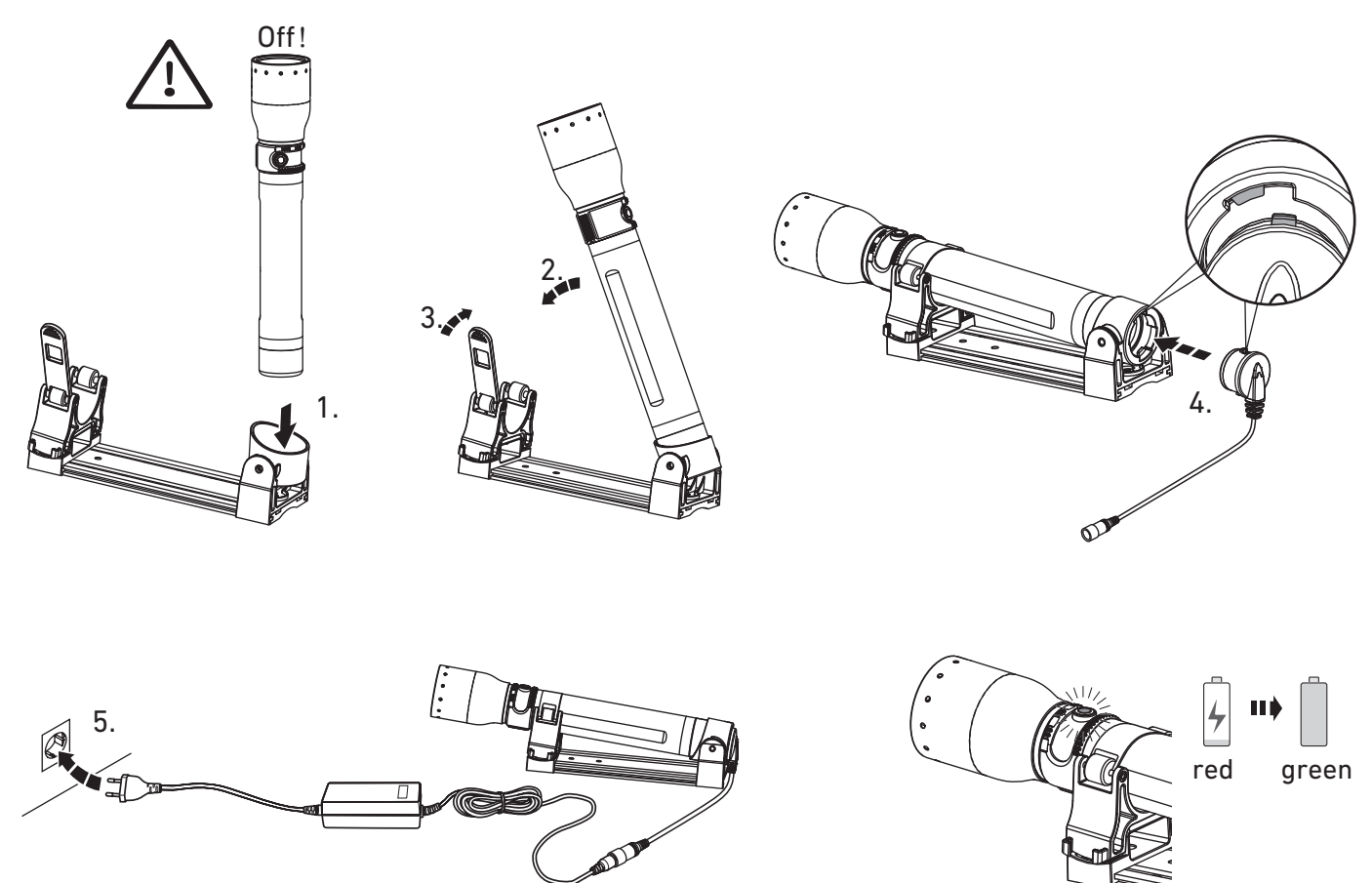
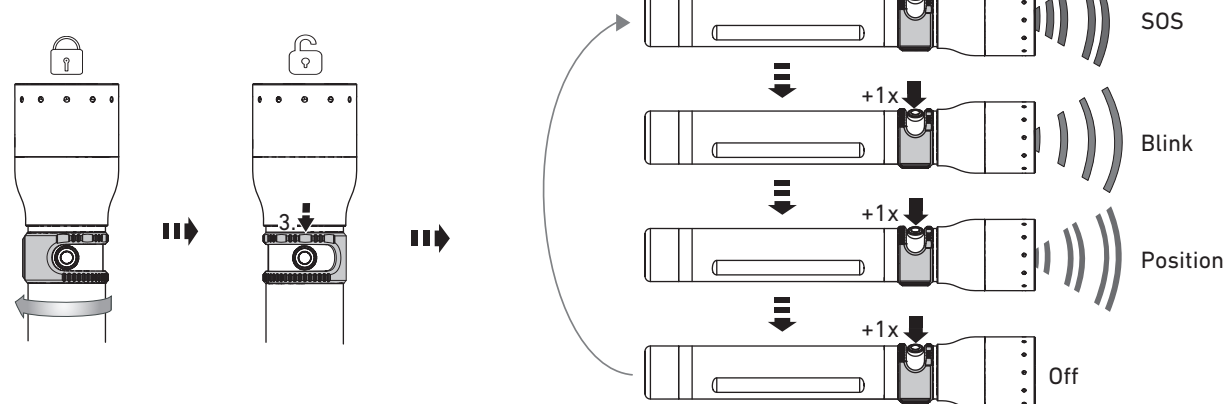
ES/CC Mode



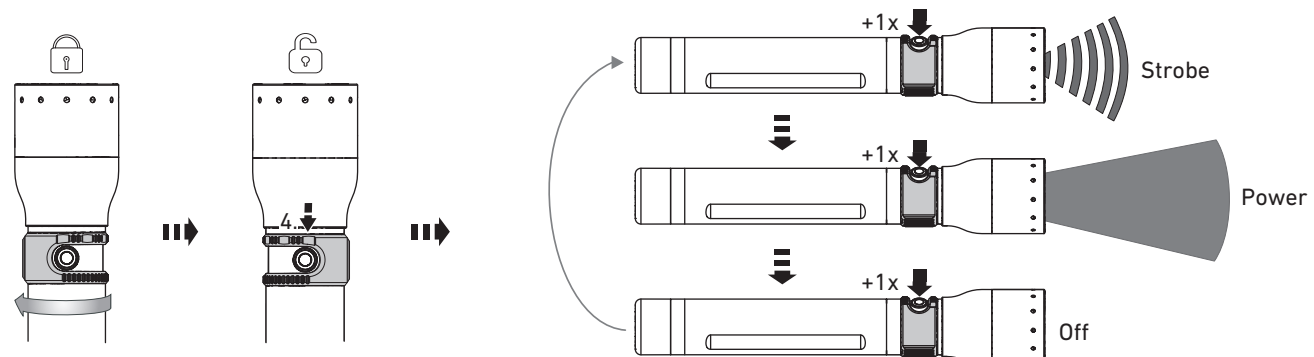
Mode2



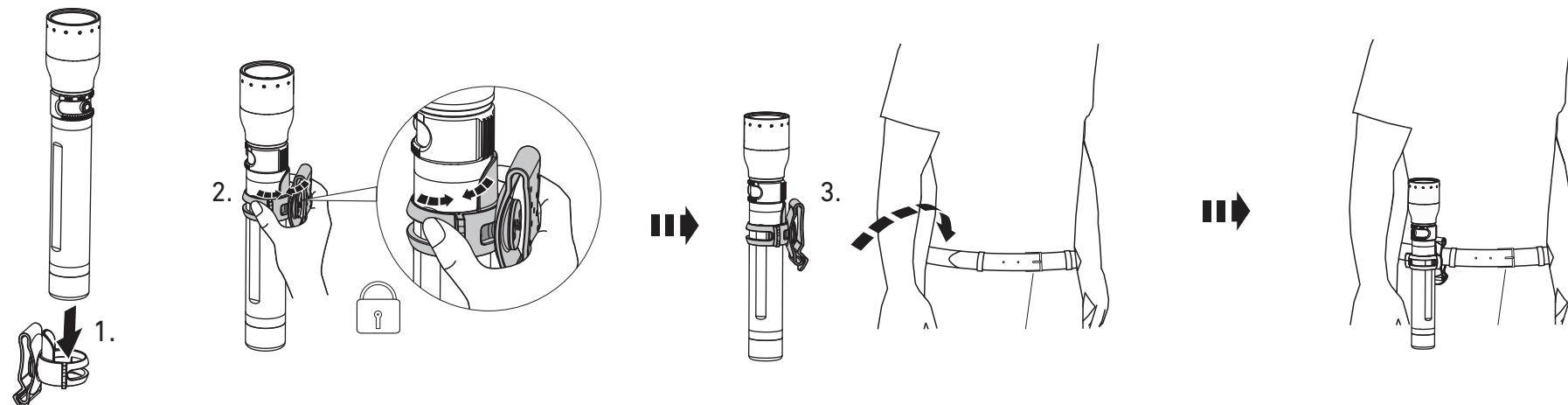
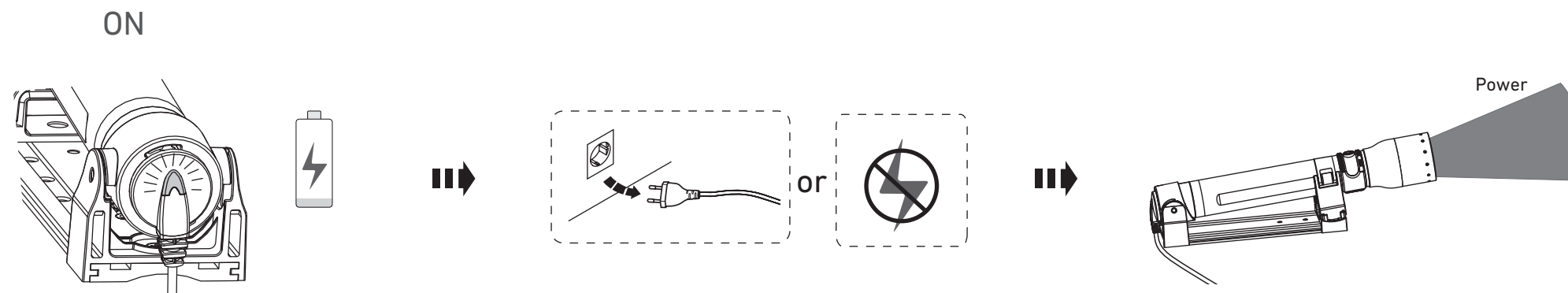
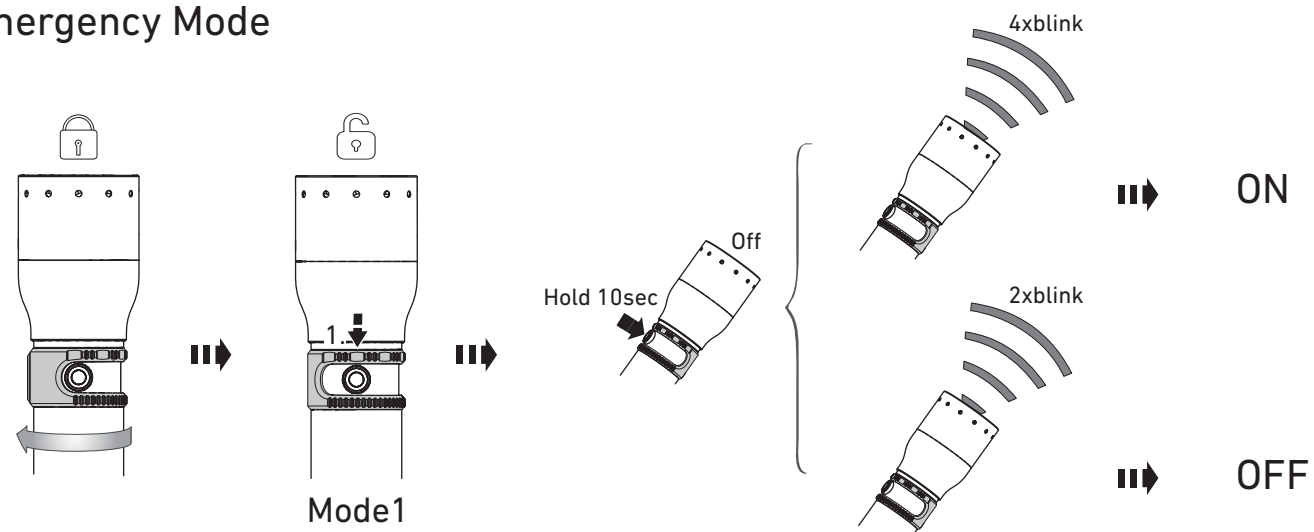
Mode3



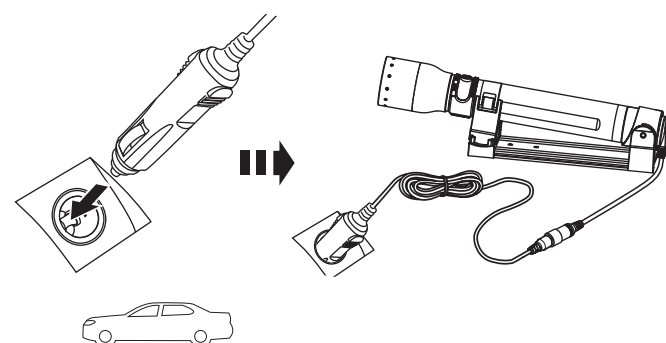
Mode4



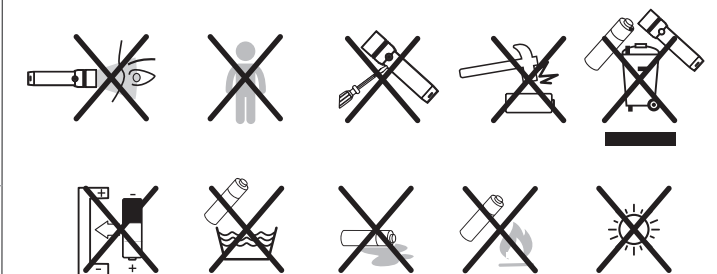
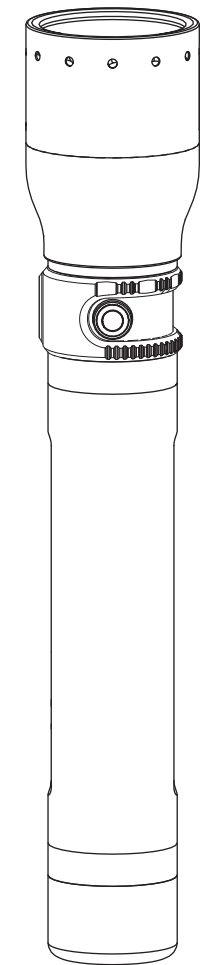
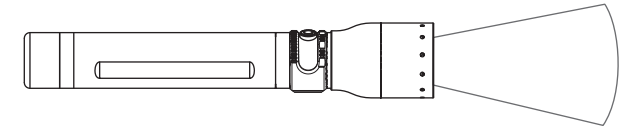
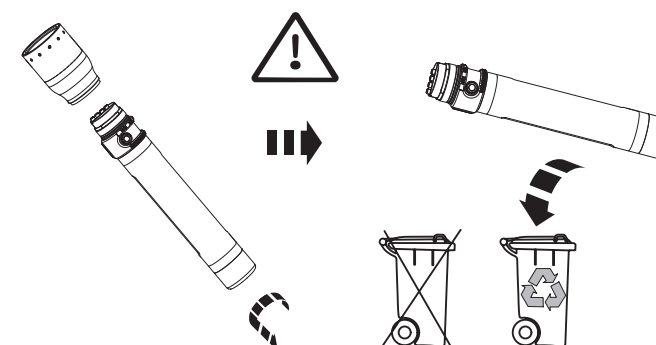
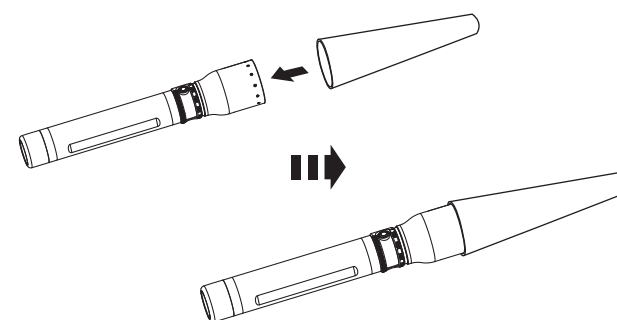
## Emergency Mode



i17R



i17R



Ledlenser GmbH & Co. KG  
Kronenstr. 5-7 • 42699 Solingen • Germany  
Phone +49 212/5948-0 Fax +49 212/5948-200  
info@ledlenser.com



www.ledlenser.com



P17R/i17R\_V.02  
17.11.2017