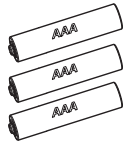
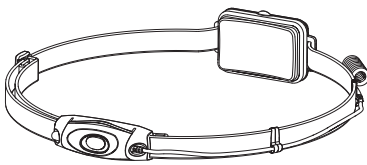


## NEO4

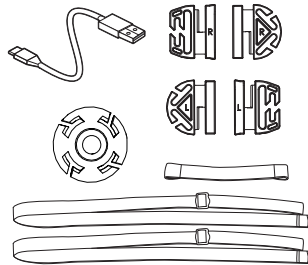
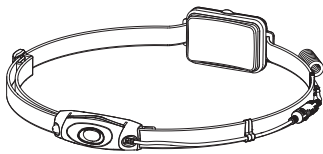


1.5V AAA

NEO6R: 500936

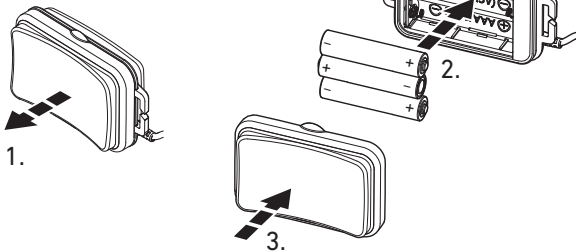
NEO6R: 500937

## NEO6R

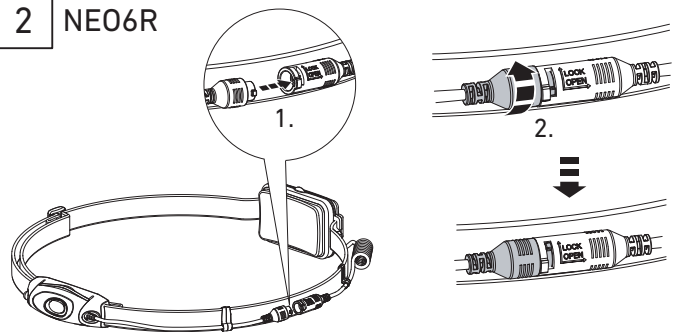


NEO6R: 500935  
NEO4: 500935

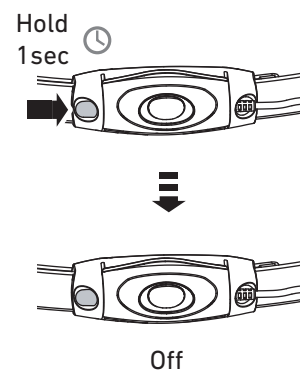
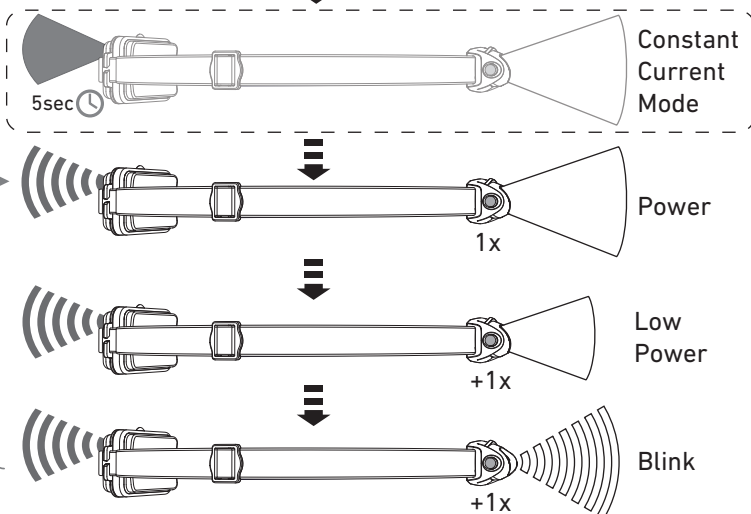
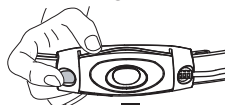
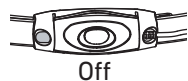
### 1 NEO4



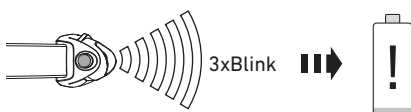
### 2 NEO6R



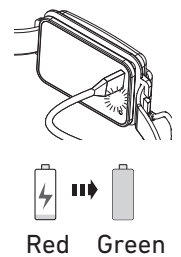
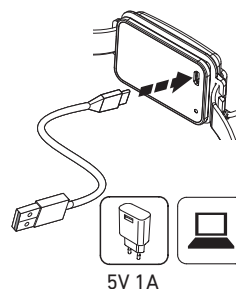
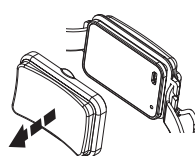
### 3



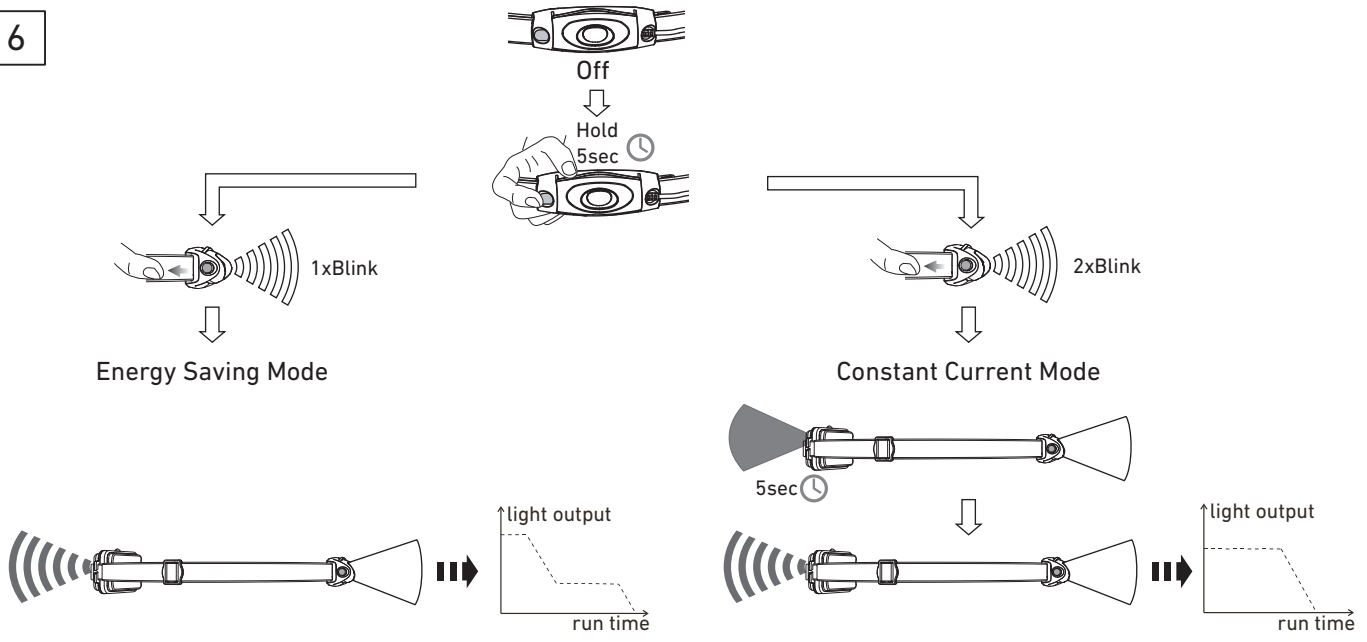
### 4



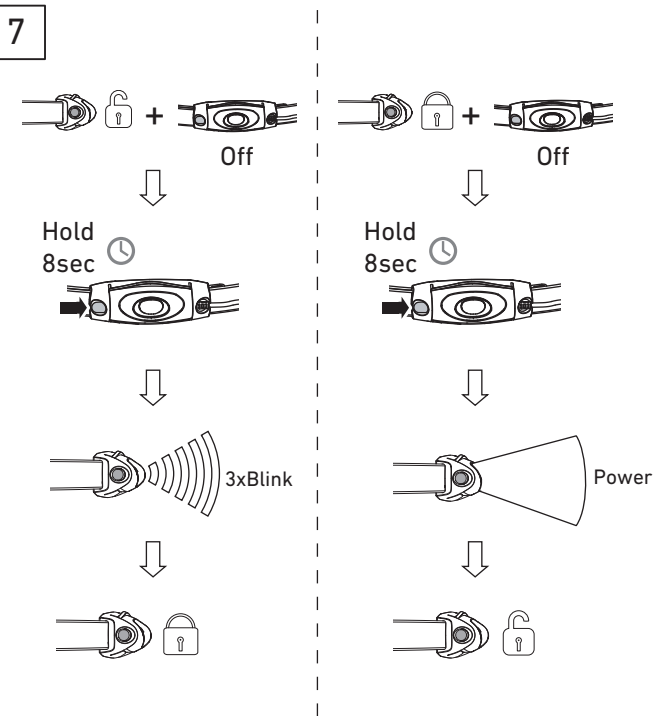
### 5 NEO6R



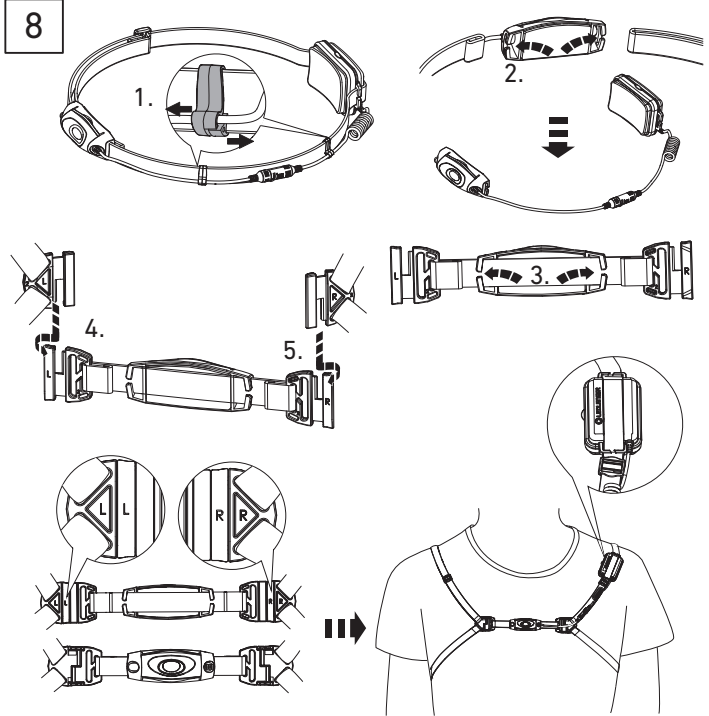
6



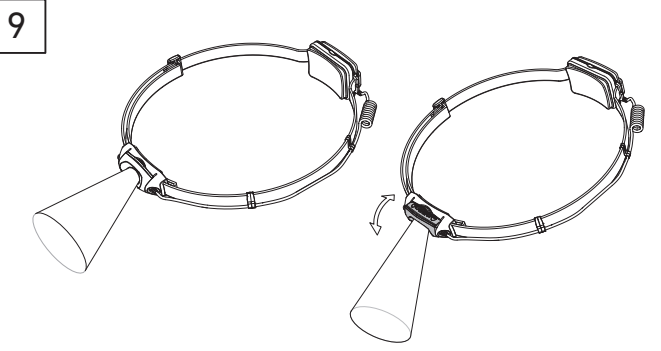
7



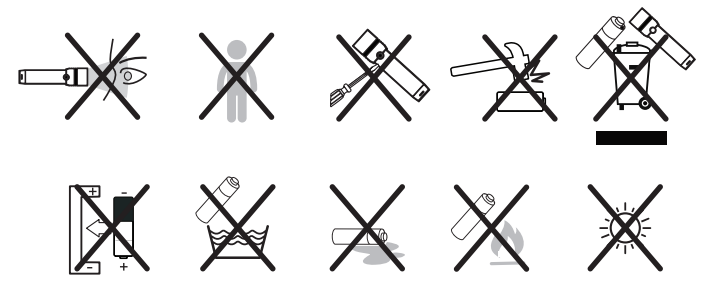
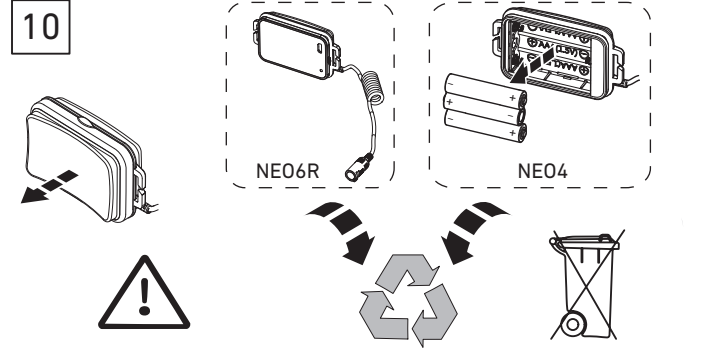
8



9



10



**Ledlenser GmbH & Co. KG**  
Kronenstr. 5-7 • 42699 Solingen • Germany  
Phone +49 212/5948-0 Fax +49 212/5948-200  
info@ledlenser.com



NE04/NE06R\_V01  
28.11.2017  
1J12A0198