

LC-R121R3P*1

FOR MAIN AND STANDBY POWER SUPPLIES.
EXPECTED TRICKLE DESIGN LIFE: 6 – 9 YEARS AT 20°C
ACCORDING TO EUROBAT.

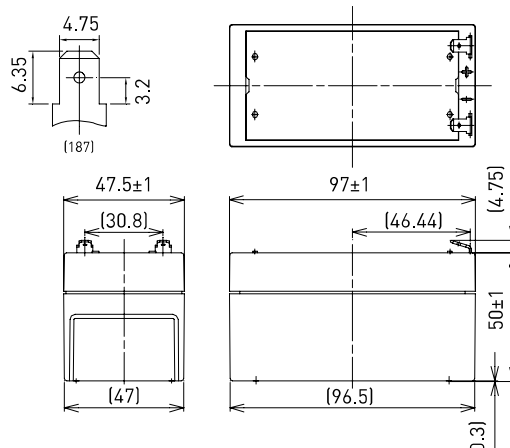
VdS

G196049

DIMENSIONS (MM)



Terminal type



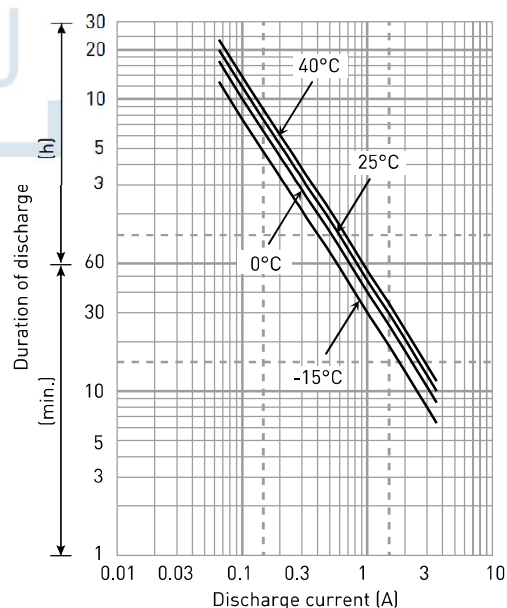
Contents indicated (including the recycle marking, etc.)
are subject to change without notice.

Battery case resin: standard (UL94 HB)

SPECIFICATIONS

| Name | | LC-R121R3P*1 |
|---|------------------------------|--------------|
| Nominal voltage | | 6V |
| Nominal capacity (20 hour rate) | | 1.3Ah |
| Dimensions | Length | 97mm |
| | Width | 47.5mm |
| | Height | 55mm |
| Approx. mass | | 0.55kg |
| Terminal | | Faston 187 |
| Capacity (25°C) | 20 hour rate | 1.3Ah |
| | 10 hour rate | 1.2Ah |
| | 3 hour rate | 1.1Ah |
| | 1 hour rate | 0.9Ah |
| Impedance | Fully charged battery (25°C) | 90mΩ |
| | | |
| Temperature dependency of capacity (20 hour rate) | 40°C | 102% |
| | 25°C | 100% |
| | 0°C | 85% |
| | -15°C | 65% |
| Self-discharge (25°C) | After 3 month | 91% |
| | After 6 month | 82% |
| | After 12 month | 64% |

DURATION OF DISCHARGE VS. DISCHARGE CURRENT



WATT TABLE (25°C)

(Wattage/battery)

| Cut-off | 3min. | 5min. | 10min. | 15min. | 20min. | 30min. | 45min. | 1h | 1.5h | 2h | 3h | 4h | 5h | 6h | 10h | 20h |
|---------|-------|-------|--------|--------|--------|--------|--------|------|------|------|------|------|------|------|------|-------|
| 9.6V | 78.1 | 61.6 | 40.2 | 30.7 | 25.8 | 19.2 | 13.6 | 10.8 | 7.49 | 5.73 | 4.32 | 3.30 | 2.73 | 2.22 | 1.46 | 0.787 |
| 9.9V | 72.5 | 57.8 | 39.4 | 30.5 | 25.3 | 19.0 | 13.5 | 10.7 | 7.34 | 5.68 | 4.30 | 3.28 | 2.70 | 2.21 | 1.45 | 0.784 |
| 10.2V | 66.9 | 54.2 | 38.4 | 29.9 | 24.9 | 18.8 | 13.4 | 10.6 | 7.19 | 5.54 | 4.25 | 3.26 | 2.68 | 2.19 | 1.44 | 0.782 |
| 10.5V | 59.4 | 48.5 | 35.6 | 27.8 | 23.7 | 18.4 | 13.1 | 10.4 | 7.04 | 5.34 | 4.19 | 3.25 | 2.66 | 2.17 | 1.43 | 0.780 |
| 10.8V | 50.2 | 42.9 | 31.7 | 26.0 | 23.0 | 17.7 | 12.9 | 10.2 | 6.82 | 5.13 | 4.08 | 3.24 | 2.60 | 2.16 | 1.41 | 0.758 |

AMPERE TABLE (25°C)

(Ampere/battery)

| Cut-off | 3min. | 5min. | 10min. | 15min. | 20min. | 30min. | 45min. | 1h | 1.5h | 2h | 3h | 4h | 5h | 6h | 10h | 20h |
|---------|-------|-------|--------|--------|--------|--------|--------|-------|-------|-------|-------|-------|-------|-------|-------|--------|
| 9.6V | 7.02 | 5.53 | 3.59 | 2.67 | 2.22 | 1.64 | 1.16 | 0.921 | 0.634 | 0.484 | 0.363 | 0.276 | 0.228 | 0.185 | 0.122 | 0.0655 |
| 9.9V | 6.52 | 5.18 | 3.52 | 2.65 | 2.18 | 1.63 | 1.15 | 0.912 | 0.621 | 0.480 | 0.361 | 0.274 | 0.226 | 0.184 | 0.121 | 0.0654 |
| 10.2V | 6.01 | 4.86 | 3.43 | 2.60 | 2.15 | 1.61 | 1.14 | 0.903 | 0.609 | 0.468 | 0.358 | 0.273 | 0.224 | 0.183 | 0.120 | 0.0652 |
| 10.5V | 5.34 | 4.35 | 3.18 | 2.42 | 2.04 | 1.57 | 1.12 | 0.885 | 0.596 | 0.451 | 0.352 | 0.272 | 0.222 | 0.182 | 0.119 | 0.0650 |
| 10.8V | 4.51 | 3.85 | 2.83 | 2.26 | 1.99 | 1.52 | 1.10 | 0.867 | 0.578 | 0.433 | 0.343 | 0.271 | 0.217 | 0.181 | 0.117 | 0.0632 |

All mentioned values are average values

LC-R121R3P*¹

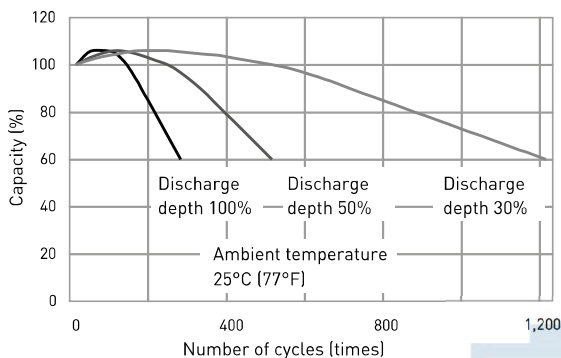
CHARGING METHOD (25°C)

Cycle use Control voltage: 14,5V - 14,9V
Initial current: 0,52A or smaller

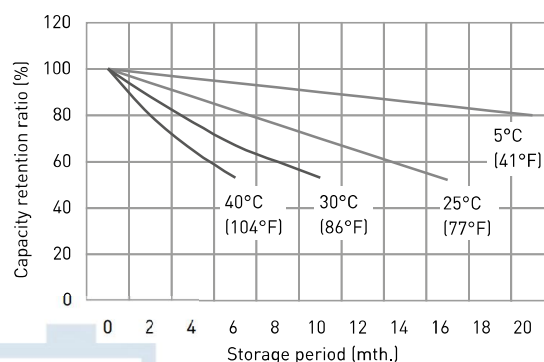
CUT-OFF VOLTAGE

| Discharge current | 0.065A - 0.26A | 0.26A - 0.65A | 0.65A - 1.3A | 1.3A - 2.6A | 2.6A - 3.9A |
|-------------------|----------------|---------------|--------------|-------------|-------------|
| Cut-off voltage | 10.5V | 10.2V | 9.9V | 9.3V | 8.7V |

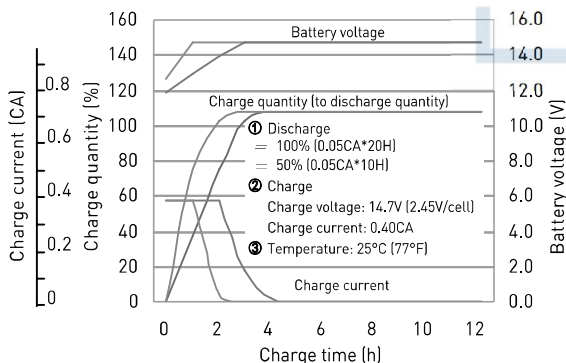
CYCLE LIFE VS. DEPTH OF DISCHARGE (ACC. IEC 61056)



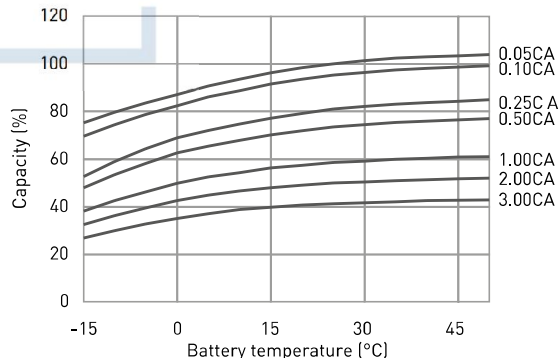
RESIDUAL CAPACITY TEST RESULT



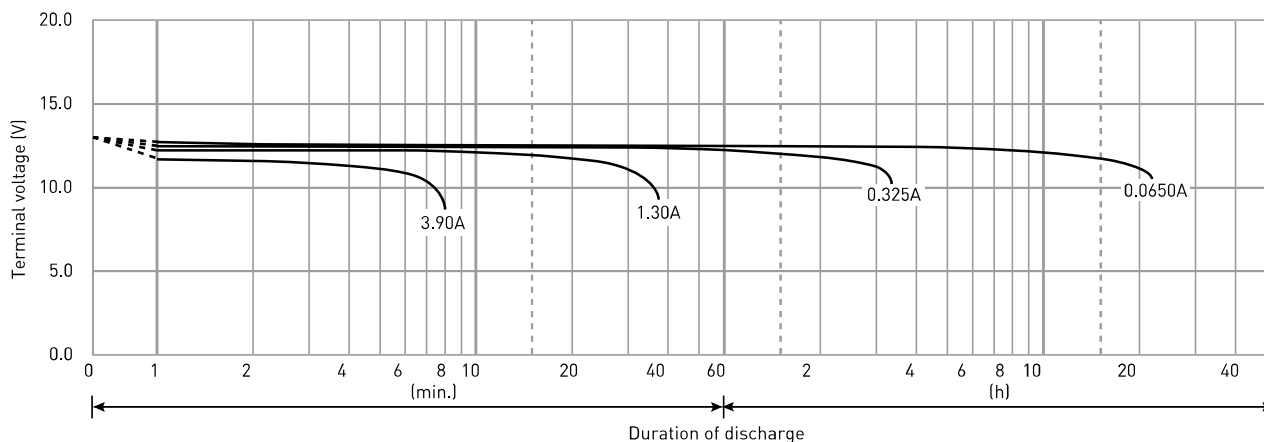
CONSTANT-VOLTAGE CONSTANT-CURRENT CHARGE CHARACTERISTICS FOR CYCLE USE



DISCHARGE CAPACITY BY TEMPERATURE AND BY DISCHARGE CURRENT



DISCHARGE CHARACTERISTICS



The data in this document are for descriptive purposes only and are not intended to make or imply any guarantee or warranty. Regarding handling and safety please consult our VRLA technical handbook chapter 1.