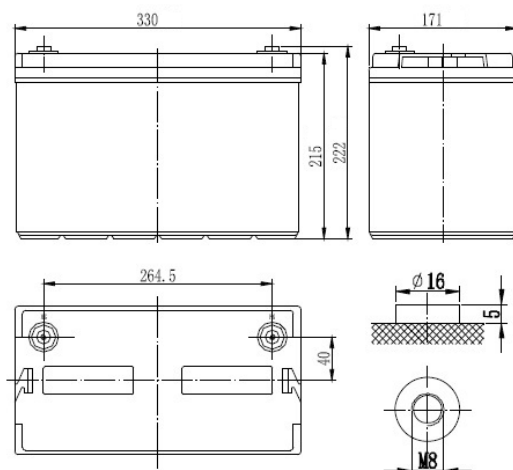




Nominal voltage	12 V	
Nominal capacity	107,0 Ah @ C20 to 1,75 V/cell 100,1 Ah @ C10 to 1,80 V/cell	
Dimensions	Length	330 mm
	Width	171 mm
	Height / Total height	215 / 222 mm
Weight	~ 29,0 kg	
Technology	VRLA (Valve Regulated Lead Acid) AGM (Absorbent Glass Mat)	
Design life time	12 years (standby use)	
Internal resistance	~ 5,7 mΩ (full charged)	
Operating temperature range	Discharge	-20°C ~ +60°C
	Charge	0°C ~ +50°C
	Storage	-20°C ~ +60°C
Maximum discharge current	900 A (5 sek.)	
Short circuit current	2 100 A	
Recommended maximum charging current	30,0 A	
Charging voltage	Standby use	13,6 ~ 13,8 VDC
	Cycle use	14,6 ~ 14,8 VDC
Self discharge	Monthly is less than 3% at 25°C	
Container material	ABS UL94HB (optional UL94-V0)	
Terminal types	Internal thread M8 (breaking torque 10-12 Nm)	



## CONSTANT CURRENT DISCHARGE CHARACTERISTICS (A at 25°C)

Voltage / Time	10 min	15 min	30 min	1 h	2 h	3 h	4 h	5 h	8 h	10 h	20 h
9.6 V	233	192	108	65,3	32,65	26,80	20,10	18,80	11,75	10,40	5,46
10.0 V	210	178	103	63,9	31,95	25,90	19,43	18,30	11,49	10,30	5,42
10.2 V	202	173	101	63,2	31,60	25,70	19,28	18,20	11,38	10,20	5,40
10.5 V	188	161	97,5	62,1	31,05	25,10	18,83	17,80	11,13	10,10	5,35
10.8 V	173	150	95,5	61,2	30,60	24,40	18,30	17,40	10,88	10,00	5,35

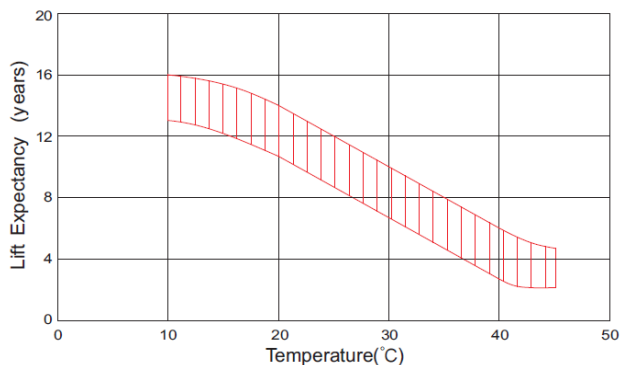
## CONSTANT POWER DISCHARGE CHARACTERISTICS (W at 25°C)

Voltage / Time	10 min	15 min	30 min	1 h	2 h	3 h	4 h	5 h	8 h	10 h	20 h
9.6 V	2436	1992	1224	780	390	310,2	232,65	216,6	135,36	119,82	62,88
10.0 V	2280	1920	1176	768	384	305,4	229,05	214,8	132,48	118,14	62,46
10.2 V	2190	1896	1152	762	381	303,6	227,7	214,2	131,1	117,48	62,22
10.5 V	2076	1830	1116	738	369	300	225	213	128,22	116,34	61,62
10.8 V	1944	1974	1080	714	357	294,6	220,95	210,6	125,34	115,2	61,62

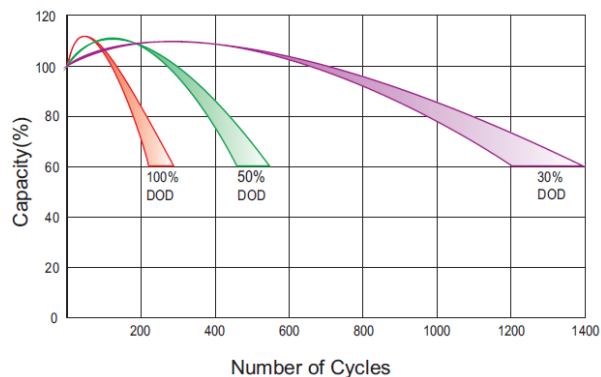
## According with:

PN-EN 60896-21:2007	ISO 9001
PN-EN 60896-22:2007	ISO 14001
PN-EN 61056-1:2013	
PN-EN 61056-2:2013	
PN-E-83016:1999	

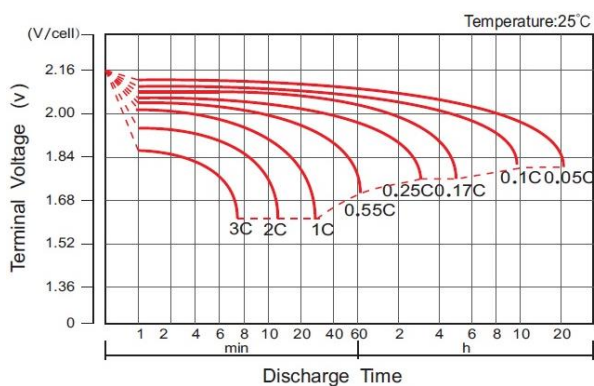
## EFFECT OF TEMPERATURE ON LONG TERM LIFE



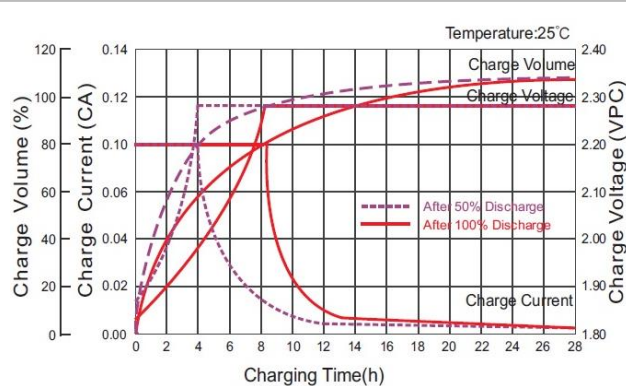
## CYCLE LIFE IN RELATION TO DEPTH OF DISCHARGE



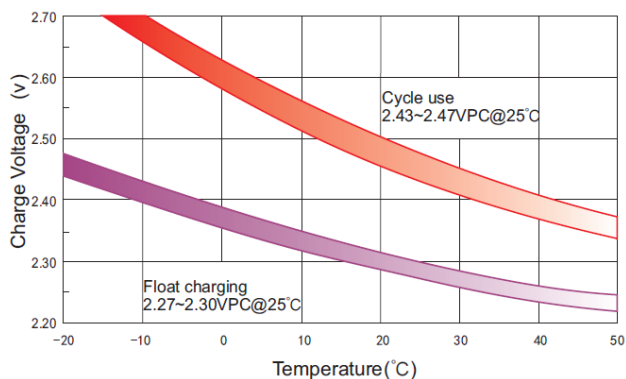
## DISCHARGE CHARACTERISTICS



## CHARGE CHARACTERISTIC FOR STANDBY USE



## RELATIONSHIP BETWEEN CHARGING VOLTAGE AND TEMPERATURE



## STORAGE CHARACTERISTICS

