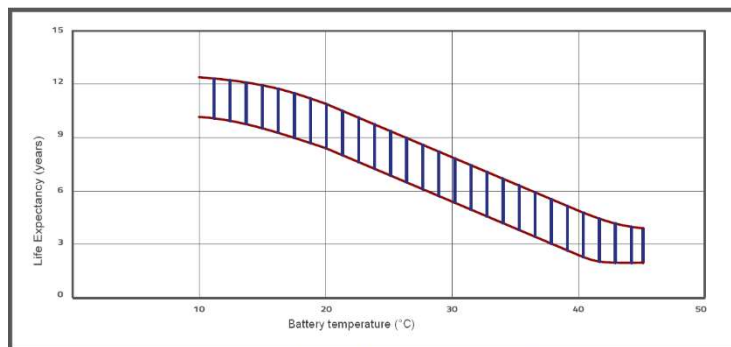
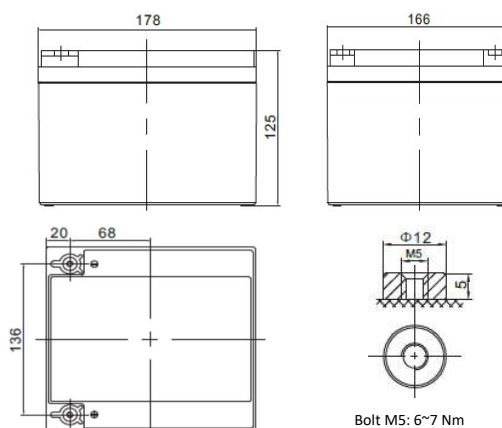




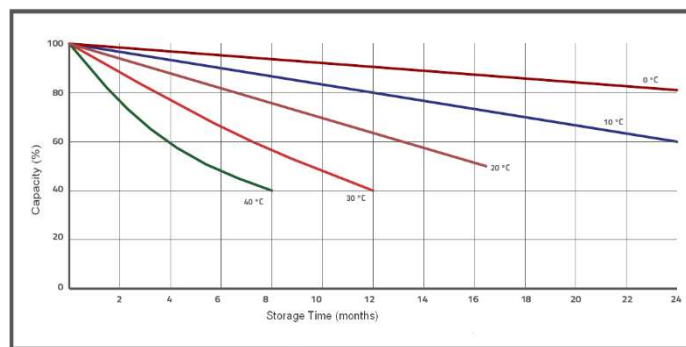
SBL 28 – 12i

(12V 28Ah)

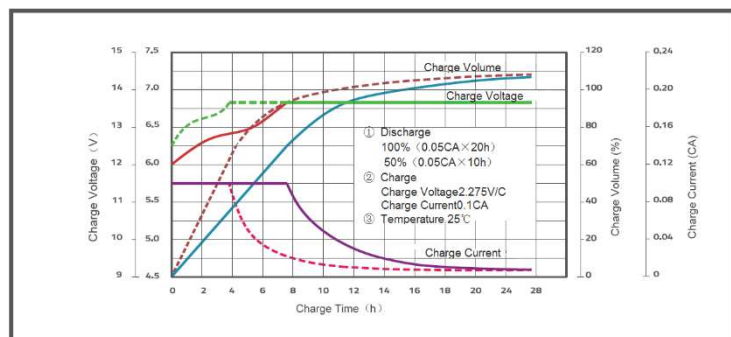
Design life time (EUROBAT)		10-12 years
Technology		VRLA
Voltage		12 V
Capacity (10hr-rate to 1,8V/cel at 25°C)		28 Ah
Dimensions	Length	178 mm
	Width	166 mm
	High / Total high	125 / 125 mm
Weight		8.6 kg
Internal resistance – full charged battery at 25°C		9.0 mΩ
Operating Temperature Range	Discharge / Storage	-20°C ~ +60°C
	Charge	0°C ~ +60°C
Normal Operating Temperature Range		25°C ± 5°C
Recommended Max Charging Current		8.4 A
Charging Voltage at 25°C	Float	13.5 to 13.8 VDC
	Cyclic	14.4 to 14.8 VDC
Container Material		ABS (UL-94HB)



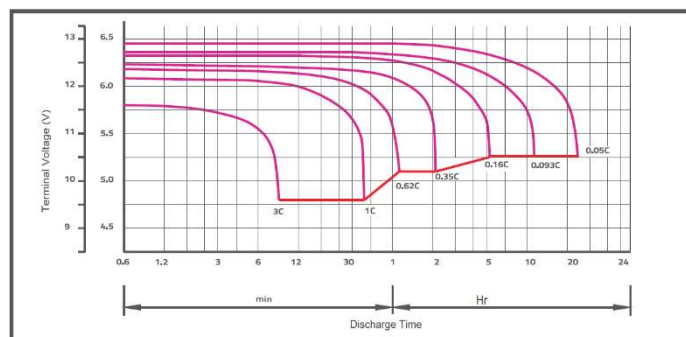
EFFECT OF TEMPERATURE ON LONG TERM FLOAT LIFE



STORAGE CHARACTERISTIC



CHARGE CHARACTERISTIC CURVE FOR STANDBY USE



DISCHARGE CHARACTERISTIC CURVE

CONSTANT CURRENT DISCHARGE CHARACTERISTICS (A at 25°C)

F.V/Time	5min	10min	15min	30min	1h	2h	3h	4h	5h	8h	10h	20h
9.6 V	105,46	68,78	50,74	29,36	16,97	10,54	7,660	6,100	5,149	3,441	2,802	1,458
10.0 V	101,65	66,73	49,41	28,72	16,65	10,38	7,559	6,024	5,090	3,406	2,776	1,446
10.2 V	96,70	64,04	47,66	27,87	16,24	10,18	7,423	5,923	5,011	3,360	2,740	1,431
10.5 V	90,33	60,56	45,39	26,75	15,69	9,907	7,243	5,789	4,906	3,298	2,693	1,410
10.8 V	82,30	56,12	42,46	25,31	14,97	9,550	7,006	5,613	4,766	3,217	2,631	1,382
11.1 V	72,42	50,56	38,77	23,46	14,05	9,086	6,697	5,382	4,584	3,109	2,548	1,346

CONSTANT POWER DISCHARGE CHARACTERISTICS (W at 25°C)

F.V/Time	5min	10min	15min	30min	1h	2h	3h	4h	5h	8h	10h	20h
9.6 V	1089,2	712	540,2	324,8	193,2	121,6	89,1	71,3	60,4	40,9	33,5	17,5
10.0 V	1077,7	709,1	537,1	322,4	191,6	120,7	88,5	70,8	60,1	40,6	33,3	17,4
10.2 V	1036,6	688,2	522,7	314,6	187,5	118,7	87,1	69,8	59,2	40,1	32,9	17,2
10.5 V	985,8	662,5	504,9	305,1	182,1	116,1	85,3	68,5	58,2	39,5	32,4	17
10.8 V	913,8	624,6	479,1	291,5	174,6	112,5	82,9	66,6	56,8	38,6	31,7	16,7
11.1 V	818,4	572,7	443,6	272,9	165,1	107,6	79,6	64,1	54,8	37,4	30,7	16,2