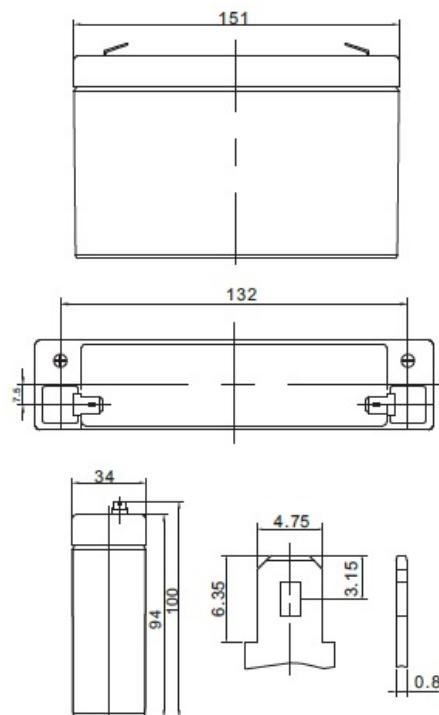


Nominal voltage	6 V	
Nominal capacity	8,0 Ah @ C20 to 1,75 V/cell	
Dimensions	Length	151 mm
	Width	34 mm
	Height / Total height	94 / 100 mm
Weight	~ 1,2 kg	
Technology	VRLA (Valve Regulated Lead Acid) AGM (Absorbent Glass Mat)	
Design life time	6-9 years (standby use)	
Internal resistance	~ 14,5 mΩ (full charged)	
Operating temperature range	Discharge	-20°C ~ +60°C
	Charge	0°C ~ +50°C
	Storage	-20°C ~ +60°C
Maximum discharge current	80 A (5 sec.)	
Short circuit current	400 A	
Recommended maximum charging current	2,40 A	
Charging voltage	Standby use	6,85 ~ 6,94 VDC
	Cycle use	7,30 ~ 7,40 VDC
Self discharge	Monthly is less than 3% at 25°C	
Container material	ABS UL94HB (optional UL94-V0)	
Terminal types	fast-on 4,8 mm	



CONSTANT CURRENT DISCHARGE CHARACTERISTICS (A at 25°C)

Napięcie / czas	5 min	10 min	15 min	30 min	1 h	2 h	3 h	4 h	5 h	8 h	10 h	20 h
4.80 V	31,718	20,686	15,261	8,832	5,103	3,011	2,189	1,743	1,471	0,983	0,801	0,417
4.95 V	30,572	20,069	14,861	8,637	5,008	2,967	2,160	1,721	1,454	0,973	0,793	0,413
5.10 V	29,081	19,261	14,335	8,381	4,883	2,908	2,121	1,692	1,432	0,960	0,783	0,409
5.25 V	27,167	18,214	13,650	8,046	4,719	2,831	2,069	1,654	1,402	0,942	0,769	0,403
5.40 V	24,752	16,878	12,770	7,611	4,504	2,729	2,002	1,604	1,362	0,919	0,752	0,395
5.55 V	21,782	15,206	11,659	7,055	4,227	2,596	1,913	1,538	1,310	0,888	0,728	0,384

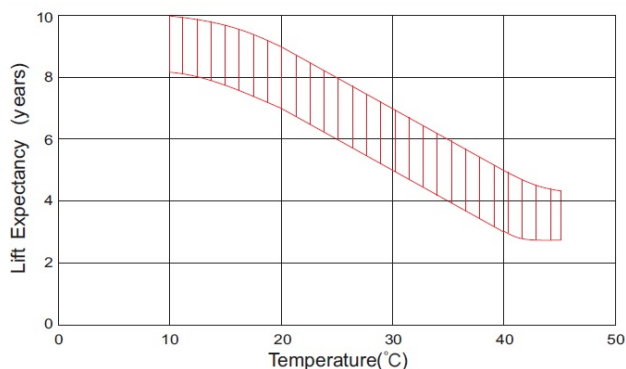
CONSTANT POWER DISCHARGE CHARACTERISTICS (W at 25°C)

Napięcie / czas	5 min	10 min	15 min	30 min	1 h	2 h	3 h	4 h	5 h	8 h	10 h	20 h
4.80 V	163,78	107,07	81,24	48,84	29,05	17,38	12,73	10,19	8,64	5,85	4,79	2,50
4.95 V	162,05	106,63	80,77	48,48	28,82	17,25	12,64	10,12	8,58	5,81	4,76	2,48
5.10 V	155,87	103,48	78,60	47,31	28,19	16,96	12,44	9,97	8,46	5,73	4,70	2,46
5.25 V	148,23	99,62	75,93	45,88	27,38	16,58	12,19	9,78	8,31	5,64	4,62	2,42
5.40 V	137,41	93,92	72,04	43,84	26,26	16,07	11,84	9,52	8,11	5,51	4,52	2,38
5.55 V	123,07	86,12	66,70	41,04	24,82	15,37	11,37	9,16	7,82	5,34	4,39	2,32

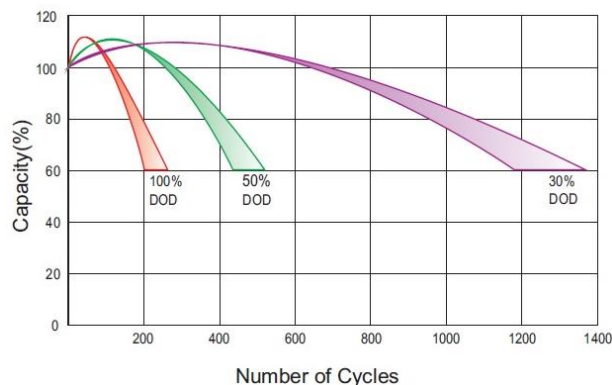
ACCORDING WITH:

PN-EN 60896-21:2007	ISO 9001
PN-EN 60896-22:2007	ISO 14001
PN-EN 61056-1:2013	
PN-EN 61056-2:2013	
PN-E-83016:1999	

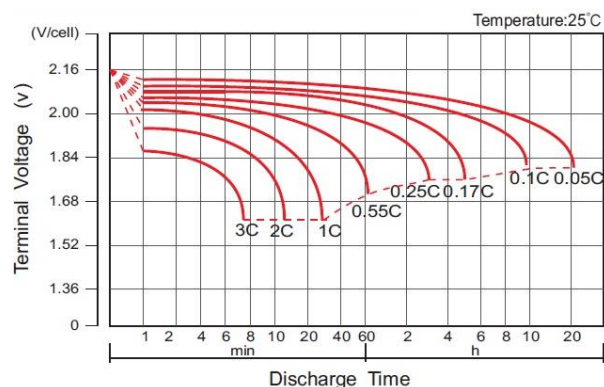
EFFECT OF TEMPERATURE ON LONG TERM LIFE



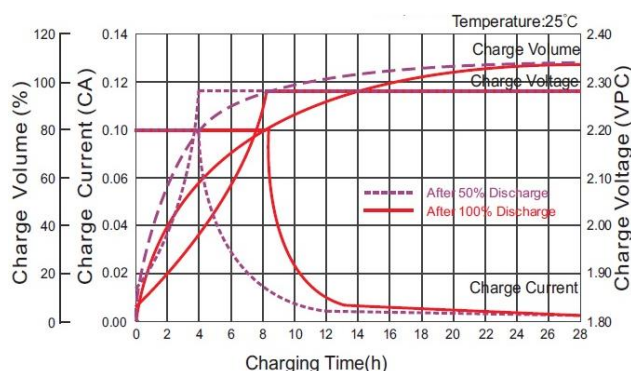
CYCLE LIFE IN RELATION TO DEPTH OF DISCHARGE



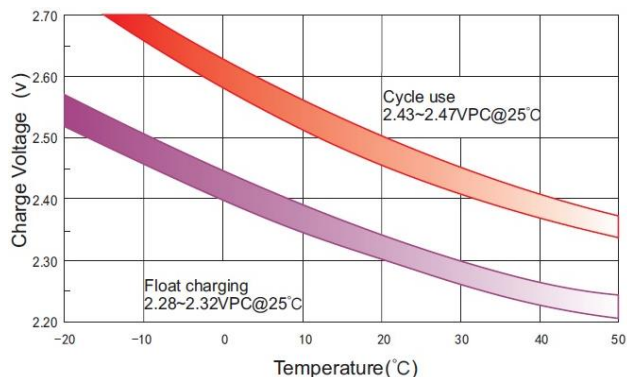
DISCHARGE CHARACTERISTICS



CHARGE CHARACTERISTIC FOR STANDBY USE



RELATIONSHIP BETWEEN CHARGING VOLTAGE AND TEMPERATURE



STORAGE CHARACTERISTICS

