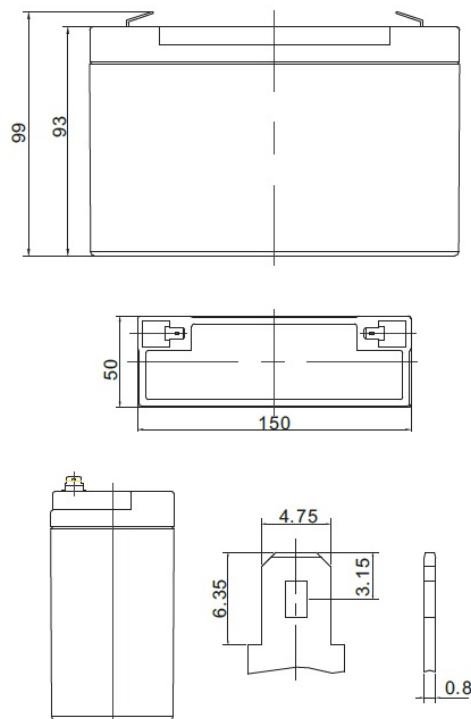


Nominal voltage	6 V	
Nominal capacity	12,0 Ah @ C20 to 1,75 V/cell	
Dimensions	Length	150 mm
	Width	50 mm
	Height / Total height	93 / 99 mm
Weight	~ 1,8 kg	
Technology	VRLA (Valve Regulated Lead Acid) AGM (Absorbent Glass Mat)	
Design life time	6-9 years (standby use)	
Internal resistance	~ 10,0 mΩ (full charged)	
Operating temperature range	Discharge	-20°C ~ +60°C
	Charge	0°C ~ +50°C
	Storage	-20°C ~ +60°C
Maximum discharge current	120 A (5 sec.)	
Short circuit current	600 A	
Recommended maximum charging current	3,60 A	
Charging voltage	Standby use	6,85 ~ 6,94 VDC
	Cycle use	7,30 ~ 7,40 VDC
Self discharge	Monthly is less than 3% at 25°C	
Container material	ABS UL94HB (optional UL94-V0)	
Terminal types	fast-on 4,8 mm	



CONSTANT CURRENT DISCHARGE CHARACTERISTICS (A at 25°C)

Napięcie / czas	5 min	10 min	15 min	30 min	1 h	2 h	3 h	4 h	5 h	8 h	10 h	20 h
4.80 V	47,577	31,029	22,891	13,247	7,654	4,516	3,283	2,614	2,207	1,475	1,201	0,625
4.95 V	45,858	30,104	22,291	12,956	7,513	4,450	3,239	2,582	2,181	1,460	1,190	0,620
5.10 V	43,622	28,892	21,502	12,572	7,325	4,362	3,181	2,539	2,147	1,440	1,174	0,613
5.25 V	40,750	27,321	20,476	12,068	7,078	4,246	3,104	2,481	2,102	1,414	1,154	0,604
5.40 V	37,128	25,316	19,155	11,416	6,755	4,093	3,003	2,405	2,043	1,379	1,127	0,592
5.55 V	32,673	22,809	17,488	10,583	6,340	3,894	2,870	2,306	1,964	1,332	1,092	0,577

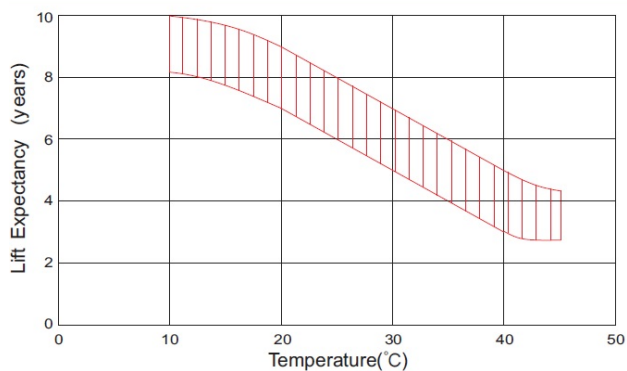
CONSTANT POWER DISCHARGE CHARACTERISTICS (W at 25°C)

Napięcie / czas	5 min	10 min	15 min	30 min	1 h	2 h	3 h	4 h	5 h	8 h	10 h	20 h
4.80 V	245,67	160,60	121,85	73,27	43,58	26,06	19,09	15,28	12,95	8,77	7,19	3,75
4.95 V	243,08	159,95	121,16	72,73	43,22	25,87	18,96	15,17	12,87	8,71	7,14	3,72
5.10 V	233,81	155,22	117,89	70,97	42,29	25,44	18,66	14,95	12,70	8,60	7,05	3,69
5.25 V	222,35	149,43	113,90	68,83	41,07	24,87	18,29	14,67	12,47	8,46	6,94	3,64
5.40 V	206,12	140,88	108,06	65,76	39,39	24,10	17,76	14,27	12,16	8,27	6,78	3,57
5.55 V	184,61	129,18	100,05	61,57	37,23	23,05	17,05	13,74	11,73	8,01	6,58	3,48

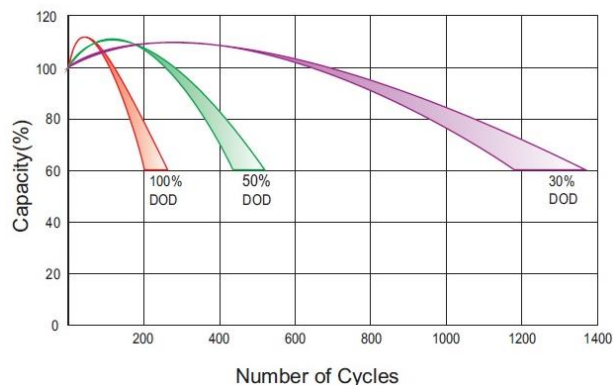
ACCORDING WITH:

PN-EN 60896-21:2007	ISO 9001
PN-EN 60896-22:2007	ISO 14001
PN-EN 61056-1:2013	
PN-EN 61056-2:2013	
PN-E-83016:1999	

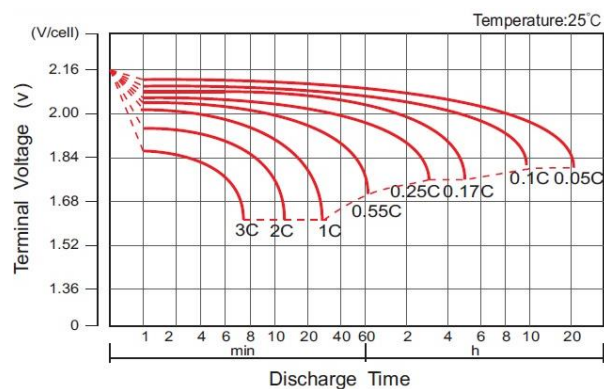
EFFECT OF TEMPERATURE ON LONG TERM LIFE



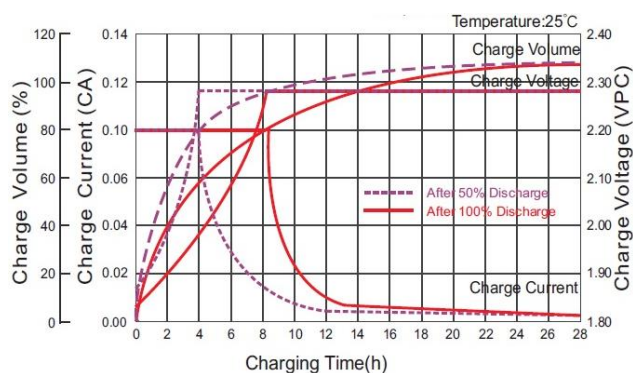
CYCLE LIFE IN RELATION TO DEPTH OF DISCHARGE



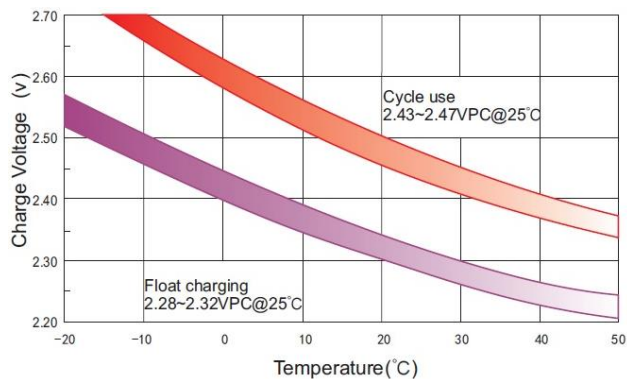
DISCHARGE CHARACTERISTICS



CHARGE CHARACTERISTIC FOR STANDBY USE



RELATIONSHIP BETWEEN CHARGING VOLTAGE AND TEMPERATURE



STORAGE CHARACTERISTICS

