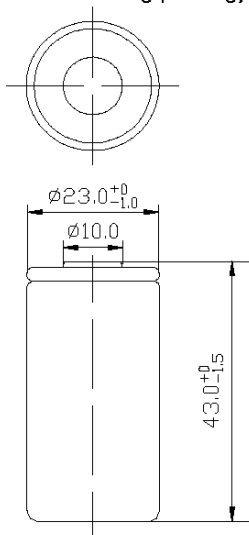


TYPE: X2000SCK/PP

Specifications

Nominal voltage			1.2V	
Capacity (mAh)			0.2C ₅ Ah ^[1]	
	Minimum		2000	
Diameter			23.0 ⁰ _{-1.0} mm	
Height			43.0 ⁰ _{-1.5} mm	
Weight ^[2]			About 46g	
Internal impedance (1000Hz.) ^[2]			≦10m Ω (After charge)	
Charge	Standard		0.2I _t A	
	Rapid		1I _t A	
	Trickle	Max.	0.05I _t A	
		Min.	0.03I _t A	
Ambient temperature	Charge	Standard ^[3]	10℃~30℃	50°F~86°F
		Rapid ^[4]	10℃~30℃	50°F~86°F
	Discharge ^[5]		-20℃~55℃	-4°F~131°F
	Storage		-20℃~25℃	-4°F~77°F

Appearance (Contain insulating packing)



Note:

- [1] Charge 7.5h at $0.2I_tA$, rest 1h, then discharge at $0.2I_tA$, end at 1.0V/cell, $20^{\circ}C$.
- [2] Weight and IR are for reference.
- [3] Charge 7.5h at $0.2I_tA$.
- [4] Charge 1.25h at $1I_tA$, $dT/dt=1^{\circ}C/3min \sim 2^{\circ}C/3min$, $TCO=45^{\circ}C$, $-\Delta V=10mV/cell \sim 15mV/cell$
- [5] Discharge at $0.2I_tA$, end at 1.0V/cell.

Typical Characteristics

